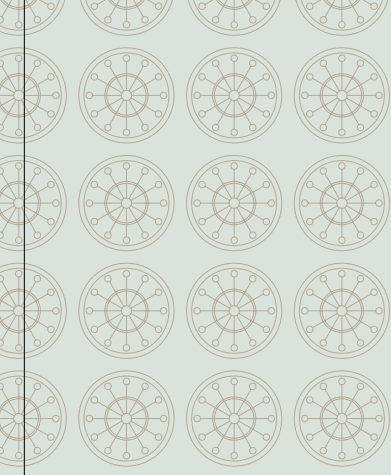


Things To Do

Long Beach

The Urban Waterfront Playground™





Shopping | Dining | Nightlife

City life

Welcome to Long Beach, California's seventh largest city and Southern California's newest coastal destination. A mix of urban sophistication with the atmosphere of a beach resort, Long Beach offers big city amenities with visitor friendly charm. Groups will find first-class accommodations, attractions, shopping, dining and seaside sightseeing all along picturesque bays and 5½ miles of sandy beachfront.

Stay and play in the heart of Southern California.

Long Beach is centrally located between the major attractions of Los Angeles/Hollywood and Disneyland and Orange County. Downtown LA, Hollywood and Universal Studios are all just 40 minutes away, and Disneyland, Disney's California Adventure and the beaches of Orange County are less than 30 minutes from downtown Long Beach.

Three airports provide easy air access to Long Beach. LAX is 30 minutes north, Orange County's Airport is 40 minutes south and Long Beach Airport is just minutes from downtown.

Long Beach boasts world class attractions.

The Queen Mary, the largest, fastest, most luxurious ocean liner of her time, entertains passengers in fine restaurants and on historical tours. The Aquarium of the Pacific features more than 11,000 inhabitants of

the Pacific Ocean, undersea galleries and live shows. Long Beach is also home to several distinctive museums including the Long Beach Museum of Art and the Museum of Latin American Art.

Our scenic downtown and waterfront marina set the standard for "walk-ability."

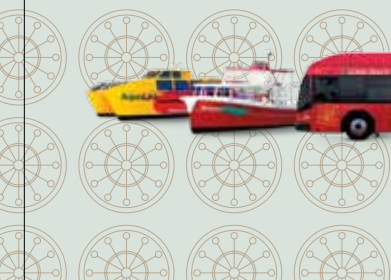
Explore each eclectic region creating the heart of our city — Pine Avenue, The Pike at Rainbow Harbor and Shoreline Village. Just three miles from downtown is Belmont Shore and 2nd Street, the classic beachfront community. Easy to reach by Long Beach Transit's bus service, here you will discover trendy shops and terrific restaurants. Long Beach offers sunny skies, world-class attractions and a variety of things to see and do year-round in a beautiful oceanfront setting.

www.downtownlongbeach.org

Looking for the best way to explore Long Beach?

Enjoy free rides around downtown on our red Passport buses or, during the summer months, visit the harbor's top destinations via our AquaLink and AquaBus. And with a day bus pass, you can experience everything else Long Beach has to offer as you ride all day for one low price - the fast, friendly and convenient way.

www.lbtransit.com



Shoreline Village

Shoreline Village is a colorful assembly of architecture reminiscent of an early California fishing village. Eclectic shops feature gifts, collectibles and gourmet chocolates. Enjoy Long Beach's warm Pacific weather by strolling Shoreline Village's wooden boardwalk which overlooks Rainbow Harbor, the downtown marina and The Queen Mary.

Catch LB Transit Passport | www.shorelinevillage.com

Location: Downtown



The Pike at Rainbow Harbor

The city's newest dining, retail and entertainment center, the Pike at Rainbow Harbor is located across the street from the Aquarium of the Pacific and features a 14-screen movie theater and KDB — the ultimate entertainment complex.

Catch LB Transit Passport | www.thepikeatlongbeach.com

Location: Downtown

Pine Avenue

On Pine Avenue you'll find a collection of fine-dining, shopping and night-time hot spots. From hot wings to haute cuisine, visitors will find more than 100 restaurants within an eight-block radius of downtown.

Location: Downtown





Cafés | Boutiques | Theatre

City streets

A few miles north of downtown, the Bixby Knolls neighborhood beckons. Along Atlantic Avenue and the surrounding area there are numerous restaurants serving a variety of cuisines, plus a large selection of retail shops. Area attractions include Rancho Los Cerritos, the Richard Goad Theatre and the Long Beach Historical Society Museum.

Catch LB Transit bus 61/63 | www.bixbyknollsinfo.com
Location: 6.6 miles from Downtown



Belmont Shore

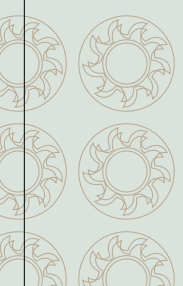
Nestled in the center of this quintessential Southern California beachside community, Belmont Shore's 2nd Street offers a collage of more than 50 matchless boutiques, specialty shops and gift stores. Belmont Shore has nearly fifty restaurants, cafés and eateries.

Catch LB Transit bus 121/131 | www.belmontshore.org
Location: 3.9 miles from Downtown

4th Street Retro Row

Located on 4th Street in between Cherry and Junipero Avenues is Retro Row. It's home to an ensemble of kitschy shops featuring vintage clothing, antiques, books, furniture and furnishings, plus a handful of local restaurants, coffee shops and wine bars.

Catch LB Transit bus 151 | www.4thstreetlongbeach.com
Location: 1.6 miles from Downtown



Attractions | Excursions | Getaways

City sights

Catch LB Transit Passport | www.queenmary.com

Time Allotted:

Behind the Scenes: 45 min. to 1 hour

World War II: 1 hour

Scorpion Submarine: Self-guided

Ghosts & Legends: 35-40 minutes

Location: Across the Bay,
1.6 miles from Downtown



The Queen Mary with Soviet Scorpion Submarine.

The Aquarium of the Pacific is home to more than 11,000 inhabitants of the Pacific Ocean. Explorer's Cove features Lorikeet Forest with colorful and friendly miniature parrots that can be hand-fed by visitors and the Shark Lagoon, where nine shark species can be viewed from above and below water. Go behind the scenes with your group to see how the animals are cared for and bred up close.

Catch LB Transit Passport | www.aquariumofpacific.org

Time Allotted: General Aquarium experience 2-3 hours

Aquarium Add-ons: 3-D Movie: 1.5 hours, Behind-the-Scenes Tour: 1.5 hours,

Animal Encounter: 2 hours

Location: Rainbow Harbor, Downtown



Princess Diana

Princess Diana will forever be remembered for her beauty, classic style, compassion and charitable works.

Diana: Legacy of a Princess captures Diana's true essence, showcasing a priceless collection of her gowns and other cherished memorabilia.

Located on Queen Mary's Sun Deck the exhibit chronicles Diana's private and public life from her days as a student at university, to her engagement and historic marriage to Prince Charles, to her reign as Princess of Wales and her extraordinary charity work. This very personal and rare exhibit includes many never before seen items and offers a more in-depth and up-close look into the life of a Princess everyone thought they knew.

The Princess Diana Collection includes an elegant dressing room featuring nine of Princess Diana's dresses and gowns. Stunningly displayed and featuring a story behind each item, these iconic dresses have transcended pop culture becoming historical artifacts of the beloved princess.

Also included are handwritten letters and notes from Princess Diana and Prince Charles, personal photographs of Prince Charles and Princess Diana, the hand-carved wooden bench that Prince Charles gave Diana as a wedding gift, wedding items including recreation of Diana's wedding bouquet, the seating chart, invitations, "thank you" notes from the royal family and more.

In the Royal Family exhibit, guests will get an inside look at Queen Mary (for whom the ship was named), as well as King George, Queen Mother Elizabeth and Queen Elizabeth II, through personal documents, letters, newspapers, royal memorabilia and more.

One of the most recognized attractions in Long Beach is The Queen Mary, one of the world's most luxurious ships that once sailed the Atlantic Ocean. The ocean liner features a 314-stateroom hotel, historical tours and several fine restaurants.



Daily Behind-the-Scenes Tours, annual festivals and a host of hands-on educational programs are offered.

Enjoy:

June Keyes Penguin Habitat

Touching Sea Creatures

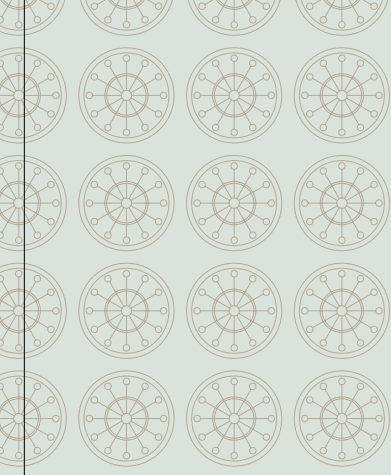
Whale Watching and Harbor Cruises

Animal Encounters

Scuba Diving

The Ocean Science Center





Walking | Biking | Cruising

City life



Whether it be by bike, bus or foot, it's easy to get around Long Beach! Recognized by Walkscore.com as one of the most Walkable Cities in America, the city's downtown waterfront sets a new standard for "walk-ability," with first-class accommodations, shopping and seaside sightseeing just steps from each other.

Bike Share Program.

Long Beach is working to become one of the Most Bicycle Friendly Cities in America. Ranked as one of the Top 25 Best Bike Cities in America by Bicycling

magazine, an upcoming Bike Share Program will provide visitors with an innovative way to discover the city on more than 100 miles of bike routes.



Duffy Boats

Located in Alamitos Bay, visitors can rent Duffy Boats that take them through the canals of Naples. Whether on a romantic cruise at sunset, entertaining family and friends during the day or leading an organizational group, the boats are safe, clean and easy to operate and are equipped with AM/FM stereo radios, CD players, coolers with ice to keep beverages cold and tables on which you can serve your favorite treats.

www.boats4rent.com | www.pelicanjoeboatrentals.com

Time Allotted: 1 hour

Location: Shoreline Village and Alamitos Bay, 6 miles from Downtown

Gondola Getaway

Relax and enjoy the scenery as your gondolier serenades you on a cruise through the canals of Naples Island, an affluent Southern California neighborhood known for its multi-million dollar waterfront homes.

www.gondolagetawayinc.com

Time Allotted: 1 hour

Location: 3.6 miles from Downtown

Harbor Cruises

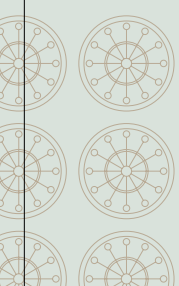
Take in beautiful views of the Long Beach skyline, the majestic Queen Mary and seal-covered buoys. Groups can enjoy a 45 or 90 minute narrated tour of the harbor or go in search of gentle giants on a three-hour excursion during whale-watching season.

www.longbeachcruises.com | www.spiritmarine.com

Time Allotted: 45 or 90 min.

Whale-watching: 3 hours

Location: Rainbow Harbor, Downtown



Museums | Vistas | Architecture

City culture

Pacific Island Ethnic Art Museum (PIEAM)

The Pacific Island Ethnic Art Museum (PIEAM) is located in the East Village Arts District and showcases the diverse cultures from the Pacific who call this area home. PIEAM's exhibits include sculptures, textiles, paintings, wooden tools, jewelry and carvings from across the Pacific.

Catch LB Transit bus 91/92/93/94/96 | www.pieam.org

Time Allotted: 1 hour per docent led tour

Location: 1 mile within Downtown; across from MoLAA

The Long Beach Museum of Art features a 1912 Craftsman mansion perched atop picturesque Bluff Park. The adjacent gallery building houses a collection of ceramics, decorative arts and contemporary paintings. After working up an appetite perusing the changing exhibitions, enjoy Claire's at the Museum for breakfast and lunch. Tours are available upon request.

Catch LB Transit bus 151 | www.lbma.org

Time Allotted: 1 hour per docent led tour | Location: 1.5 miles from Downtown



Museum of Latin American Art (MoLAA)

The Museum of Latin American Art is the only museum in the Western U.S. that presents cutting edge artists from Mexico, Central and South America and the Spanish-speaking Caribbean. For those in the group who prefer to go at their own pace, enhance the experience with an audio tour by renting an mp3 player or using a mobile phone.

Catch LB Transit bus 91/92/93/94/96 | www.molaa.com

Time Allotted: 1 hour per docent led tour

Location: 1 mile within Downtown; across from PIEAM



Cultural | Historic | Green

City gardens

The Earl Burns Miller Japanese Garden is an internationally acclaimed 1.3 acre Japanese-style garden located on the sprawling campus of California State University, Long Beach. Featuring lush greenery, a traditional Japanese tea house, dry garden, lanterns, bridges and koi fish pond. Docent led tours of the garden are available for groups of 10 or more.

Catch LB Transit bus 81/90s | www.csulb.edu/~jgarden/index.html
Location: 5.2 miles from Downtown



Rancho Los Alamitos Historic Ranch & Garden

Become familiar with the rich history of Southern California with a tour of this authentic ranch house and its four acres of nationally significant gardens and barns. Tours can be tailored to meet groups' individual needs and interests, from the landscape architect designed gardens to the history of the ranch house.

Catch LB Transit bus 81 | www.ranchosalamitos.com
Time Allotted: 1.5 hour per docent led tour
Location: 7.4 miles from Downtown



Rancho Los Cerritos Historic Site

A National, State and Long Beach Historic Landmark, the Rancho boasts a two-story Monterey-style adobe house with tranquil gardens on the grounds. Take in lunch on the grounds after enjoying a house and garden tour or experience a "living history" demonstration with a historical reenactment and knowledgeable docents.

Catch LB Transit bus 51 | www.rancholoscerritos.org
Time Allotted:
House and Garden Tour: 2 hours 15 min.
Living History: 1 hour 15 min.
Garden Tour: 1 hour 15 min.
Location: 8.1 miles from Downtown



Points of interest

Suggested Itineraries -

Aquarium/Harbor Cruise

Experience life above and below the ocean on a day tour featuring the Aquarium of the Pacific and a scenic harbor cruise. Get up close with the animals during a Behind-the-Scenes tour of the Aquarium. Grab lunch at one of the many surrounding restaurants in Shoreline Village or Rainbow Harbor before your narrated cruise of the Long Beach harbor. Be sure to bring along your camera to capture the breath-taking views.

The Queen Mary

One of the most recognized attractions in Long Beach is The Queen Mary, one of the world's most luxurious ships that once sailed the Atlantic Ocean. Be sure to visit the Russian Scorpion Submarine docked just outside. Have lunch at the Promenade Café and enjoy picturesque views of the harbor and city skyline. Browse specialty shops before experiencing the *Diana: Legacy of a Princess* exhibit, and the Ghosts & Legends Tour, taking you through areas of the ship known to be haunted.



Tour de Arts

Art lovers will appreciate the culture and creativity of the Long Beach art scene. After a short drive down scenic Ocean Boulevard, arrive at the Long Beach Museum of Art. Explore the two floors of galleries on a scheduled docent led tour then make your way to the Museum of Latin American Art (MoLAA) downtown. Those who prefer to go it alone can rent an mp3 player or use their mobile phone to access an automated audio tour as well. Just a short walk from MoLAA is the always popular Pacific Island Ethnic Art Museum (PIEAM), where both group and individual tours are available.



Garden Tours

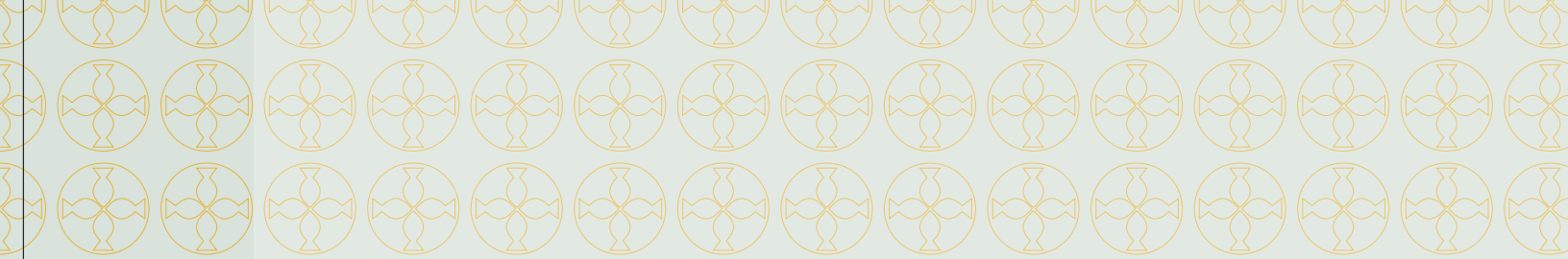
Begin your day at the Earl Burns Miller Japanese Gardens with a tour of the garden's waterfalls, tea house, Zen Garden and Koi pond. Next stop, the gardens of Rancho Los Alamitos located just up the hill from campus. Take a tour of the four-acre garden designed by preeminent landscape architects of the 1920s-1940s. A short drive takes you to Rancho Los Cerritos, a National, State and Long Beach Historic site.

Day Trip to Catalina Island

Board a speedy catamaran to the island from the Catalina Express Landing. One short hour and 22 miles later, arrive at the City of Avalon on beautiful Catalina Island. Hike above the hills of Catalina or glimpse the world below the waves on a classic glass bottom boat tour. Deep sea fish, kayak, scuba dive, snorkel or simply lie out on the beach and watch the waves roll in. With several daily sailings between Long Beach and Avalon, it's easy to customize the length of your trip to fit your needs.

www.catalinaexpress.com





800.452.7829

visitlongbeach.com

 facebook.com/visit.longbeach.ca

 twitter.com/visitlongbeach

Centered in the heart of Southern California



LONG BEACH 
CALIFORNIA™